

COMPONENT SPECIFICATION

USE OR REPRODUCTION OF THIS DRAWING FOR THE PURPOSE OF MANUFACTURING THIS ARTICLE OR ANY ARTICLES SHOWN FOR ANY PURPOSE IS STRICTLY PROHIBITED WITHOUT WRITTEN PERMISSION FROM SENIOR INDUSTRIES, INC.

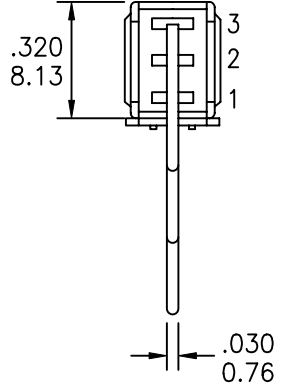
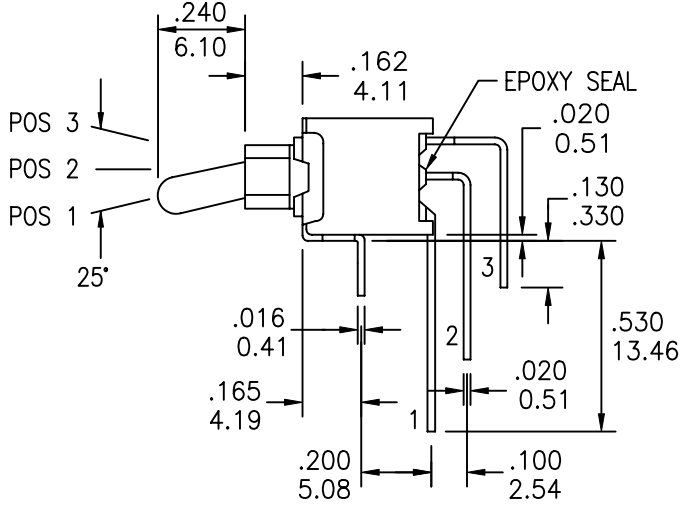
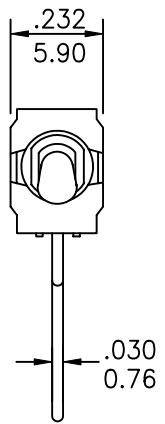
A

B

C

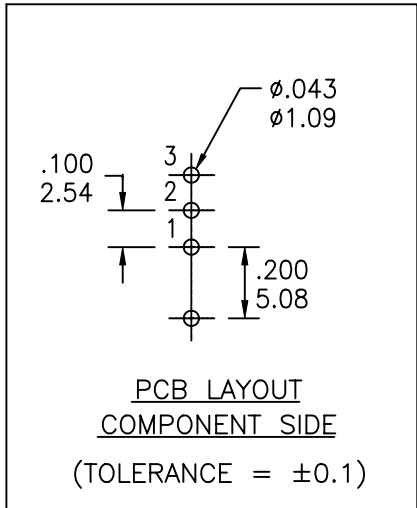
D

E



SSST-90XX-TECXE SHOWN

| MODEL NO. | SWITCHING POSITION | | |
|-------------|-------------------------------|------|-----|
| | | | |
| 907 | ON | NONE | ON |
| 907A | ON | NONE | MOM |
| 908 | ON | OFF | ON |
| 908A | MOM | OFF | MOM |
| 908B | ON | OFF | MOM |
| CONN. TERMS | 2-3 | OPEN | 2-1 |
| SCHMATIC | SPDT NON-SHORTING TYPE | | |



RoHS COMPLIANT

| DESIGNED: | | | SYM. | DATE | DESCRIPTION OF REVISIONS | DRAWN | APPD. |
|-----------|-----|----------|------|----------|---|-------|-------|
| DRAWN: | RB | 03/13/01 | ▲ | 03.13.01 | NEW | RB | JF |
| CHECKED: | GAT | 12/10/07 | ▲ | 12.10.07 | Updated general dims. Corrected PN Builder options. New indicator | GAT | JF |
| APPROVED: | JF | 12/10/07 | ▲ | | | | |

| | | | | | | | |
|-----------|--|-------|-------|--------|-----|------|---|
| 3RD ANGLE | | UNIT: | IN/mm | SCALE: | 2:1 | REV. | B |
|-----------|--|-------|-------|--------|-----|------|---|

| | | | |
|--------|----------------------|----------|--|
| | TOLERANCE: | PART NO: | SEE CHART |
| | TO 1 DECIMAL PLACE: | ±.2 | TITLE: SSST 907/908 SEALED TOGGLE SWITCH |
| | TO 2 DECIMAL PLACES: | ±.10 | |
| | AS ANGLES: | ±1/2° | |
| SHEET: | | 1 OF 3 | |

1

2

3

4

COMPONENT
SPECIFICATIONUSE OR REPRODUCTION OF THIS DRAWING FOR THE PURPOSE OF MANUFACTURING THIS
ARTICLE OR ANY ARTICLES SHOWN FOR ANY PURPOSE IS STRICTLY PROHIBITED WITHOUT
WRITTEN PERMISSION FROM SENIOR INDUSTRIES, INC.SPECIFICATIONSELECTRICAL

CONTACT RATING:

SILVER: 3A @ 120 VAC OR 28 VDC, 1A @ 250 VAC

GOLD: 0.4 VA MAX. @ 20 V MAX. (AC OR DC)

CONTACT RESISTANCE: 20 MILLIOHMS MAX.

INSULATION RESISTANCE: 1,000 MEGOHMS MIN. AT 500 VDC

DIELECTRIC STRENGTH: 1,000 VRMS

MECHANICAL

LIFE: 30,000 CYCLES

ENVIRONMENTAL

OPERATING TEMPERATURE: -30°C TO +85°C

MATERIAL

CASE: GLASS FILLED NYLON 66, UL94V-0

ACTUATOR: BRASS, CHROME PLATED, INTERNAL O-RING SEAL STANDARD

BUSHING: GLASS FILLED NYLON 66, UL94V-0

SUPPORT: BRASS, TIN PLATED

CONTACT/TERMINALS: COPPER ALLOY, SILVER OR GOLD PLATED

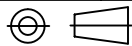
PART NUMBER BUILDER:

| SERIES | MODEL NO. | ACTUATOR | BUSHING | TERMINATION | CONTACT PLATING | SEAL |
|--------|----------------------|---------------------------------------|----------------------|----------------------|----------------------|----------------------|
| SSST - | <input type="text"/> | <input type="text"/> | <input type="text"/> | <input type="text"/> | <input type="text"/> | <input type="text"/> |
| | 907 | S (.400 HIGH) | E (.183 HIGH) | C (PC MOUNT) | Q (SILVER) | BLANK |
| | 907A | T (.240 HIGH) | G (.196 HIGH) | | R (GOLD) | E (EPOXY) |
| | 908 | U (.320 HIGH) | | | | |
| | 908A | V (.550 HIGH) | | | | |
| | 908B | W (PLASTIC, ANTI-STATIC .400 HIGH) | | | | |
| | | Z (PLASTIC, ANTI-STATIC .240 HIGH) | | | | |

RoHS COMPLIANT

| DESIGNED: | | | SYM. | DATE | DESCRIPTION OF REVISIONS | DRAWN | APPD. |
|-----------|-----|----------|------|----------|---|-------|-------|
| | | | △ | 03.13.01 | NEW | RB | JF |
| DRAWN: | RB | 03/13/01 | △ | 12.10.07 | Updated general dims. Corrected PN Builder options. New indicator | GAT | JF |
| CHECKED: | GAT | 12/10/07 | △ | . | | | |
| APPROVED: | JF | 12/10/07 | △ | . | | | |

3RD ANGLE



UNIT:

IN/mm

SCALE:

REV.

B

**SENIOR
INDUSTRIES, INC.**

TOLERANCE:

TO 1 DECIMAL PLACE: ±

TO 2 DECIMAL PLACES: ±

AS ANGLES: ±

SHEET:

PART NO:

SEE CHART

TITLE:

SSST 907/908 SEALED
TOGGLE SWITCH

2 OF 3

1

2

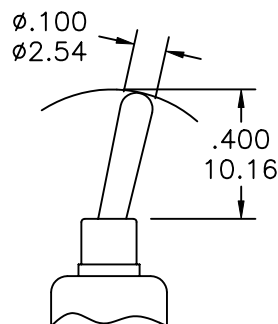
3

4

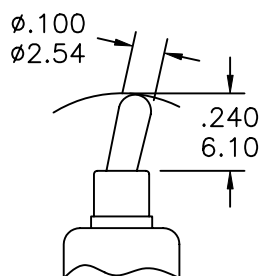
COMPONENT
SPECIFICATIONUSE OR REPRODUCTION OF THIS DRAWING FOR THE PURPOSE OF MANUFACTURING THIS
ARTICLE OR ANY ARTICLES SHOWN FOR ANY PURPOSE IS STRICTLY PROHIBITED WITHOUT
WRITTEN PERMISSION FROM SENIOR INDUSTRIES, INC.

A

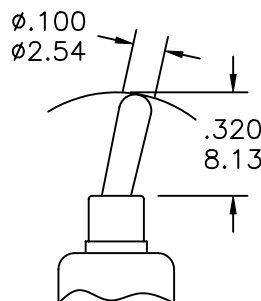
ACTUATOR OPTIONS



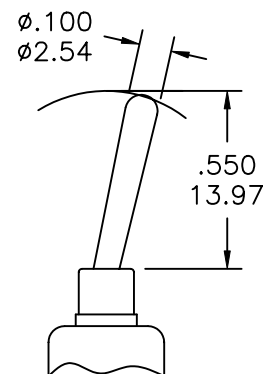
S



T



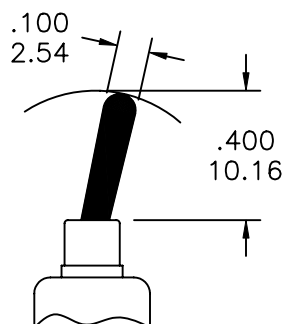
U



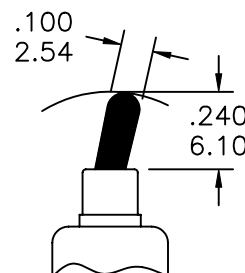
V

B

C



W

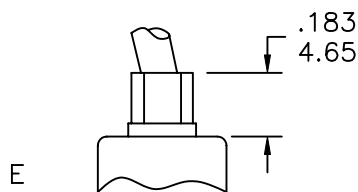


Z

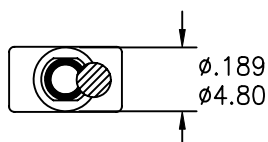
PLASTIC ACTUATOR

D

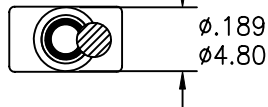
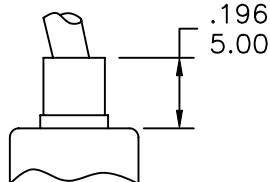
BUSHING OPTIONS



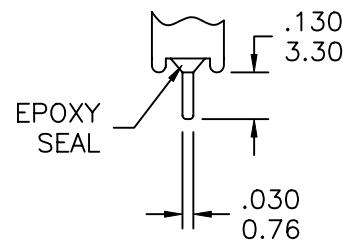
E



G



TERMINATION OPTIONS



C (PC MOUNT)

RoHS COMPLIANT

DESIGNED:

RB

03/13/01

SYM.

DATE

DESCRIPTION OF REVISIONS

DRAWN

APPD.

DRAWN:

RB

03/13/01

△

03.13.01

NEW

RB

JF

CHECKED:

GAT

12/10/07

△

12.10.07

Updated general dims. Corrected PN Builder options. New indicator

GAT

JF

APPROVED:

JF

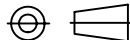
12/10/07

△

12.10.07

.

3RD ANGLE



UNIT:

IN/mm

SCALE:

2:1

REV.

B

SENIOR
INDUSTRIES, INC.

TOLERANCE:

TO 1 DECIMAL PLACE: ±.2

TO 2 DECIMAL PLACES: ±.10

AS ANGLES: ±1/2°

SHEET:

PART NO:

SEE CHART

TITLE:

SSST 907/908 SEALED
TOGGLE SWITCH

3 OF 3

E