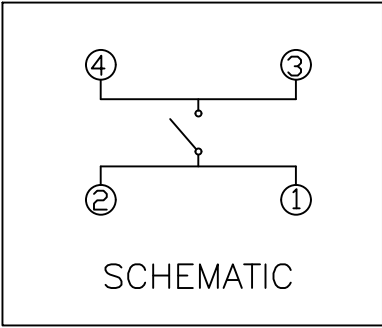
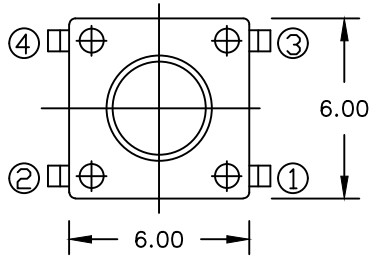


1	2	3	4	5
COMPONENT SPECIFICATION	USE OR REPRODUCTION OF THIS DRAWING FOR THE PURPOSE OF MANUFACTURING THIS ARTICLE OR ANY ARTICLES SHOWN FOR ANY PURPOSE IS STRICTLY PROHIBITED WITHOUT WRITTEN PERMISSION FROM SENIOR INDUSTRIES, INC.			

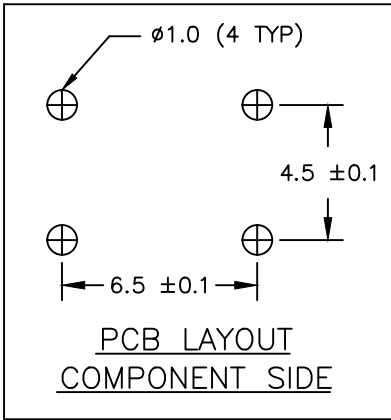
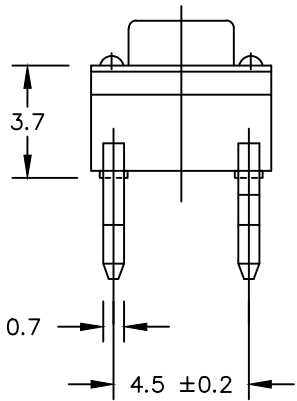
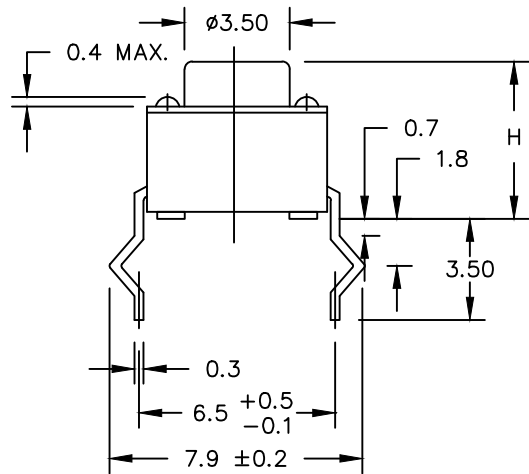
FIRST 'X' IN PART NUMBER DENOTES OPERATING FORCE.
 'A' = 120 ±30 gf 'B' = 160 ±30gf 'E' = 590 ±30gf
 'C' = 260 ±30gf 'D' = 100 ±30gf

SECOND 'X' IN PART NUMBER DENOTES ACTUATOR HEIGHT:
 'A' - DIM 'H' = 4.3mm 'H' - DIM 'H' = 11.5mm
 'B' - DIM 'H' = 5.0mm 'I' - DIM 'H' = 12.0mm
 'C' - DIM 'H' = 7.0mm 'J' - DIM 'H' = 13.0mm
 'D' - DIM 'H' = 7.5mm 'K' - DIM 'H' = 14.5mm
 'E' - DIM 'H' = 8.0mm 'L' - DIM 'H' = 15.0mm
 'F' - DIM 'H' = 9.5mm 'M' - DIM 'H' = 17.0mm
 'G' - DIM 'H' = 11.0mm

A



B



C

RoHS COMPLIANT



SENIOR INDUSTRIES, INC.

DESIGNED:			SYMBOL	DATE	DESCRIPTION OF REVISIONS	DRAWN:	APPD:	TOLERANCE:	PART NO:	SRT-KRS-0611-XX
DRAWN:	RB	02/28/01	▲	05.11.01	Corr tol to ±.3&±13 for metric dims	RB	JF	TO 1 DECIMAL PLACE: ±.3	TITLE:	TACT SWITCH
CHECKED:	GAT	01/20/06	▲	06.07.01	Operating force, E option of 590±30gf added:	RB	JF			
APPROVED:	JF	01/20/06	▲	10.06.05	Dwg updated, Actuator H options, mat corr to ny66	GAT	JF	TO 2 DECIMAL PLACES: ±.13	SHEET:	1 OF 2
			▲	01.20.06	Part is RoHS compliant	GAT	JF	AS ANGLES: ±1/2°		
			▲	10.15.12	Correct contact switching rating	GAT	JF			
3RD ANGLE		UNIT:	mm	SCALE:	4:1	REV.	G			

1

2

3

4

5

COMPONENT
SPECIFICATIONUSE OR REPRODUCTION OF THIS DRAWING FOR THE PURPOSE OF MANUFACTURING THIS
ARTICLE OR ANY ARTICLES SHOWN FOR ANY PURPOSE IS STRICTLY PROHIBITED WITHOUT
WRITTEN PERMISSION FROM SENIOR INDUSTRIES, INC.SPECIFICATIONSELECTRICAL:

CONTACT RATING: 50mA AT 24 VDC
 CONTACT RESISTANCE: 100 MILLIOHMS MAX.
 INSULATION RESISTANCE: 100 MEGOHMS MIN. AT 500 VDC
 DIELECTRIC STRENGTH: 500 VAC FOR 1 MINUTE

MECHANICAL:

OPERATING LIFE: 100,000 CYCLES MIN.
 TRAVEL: 0.25 +0.2/-0.1mm

ENVIRONMENTAL:

OPERATING TEMPERATURE: -35°C TO +85°C
 STORAGE TEMPERATURE: -35°C TO +85°C

MATERIAL:

HOUSING: NYLON 66, UL94HB, BLACK
 ACTUATOR: NYLON 66, UL94HB, BLACK
 TERMINALS: 0.3mm BRASS, SILVER PLATED
 DOME CONTACT: COPPER ALLOY, SILVER PLATED

RoHS COMPLIANT

**SENIOR
INDUSTRIES, INC.**

DESIGNED:			SYMBOL	DATE	DESCRIPTION OF REVISIONS:	DRAWN:	APPD:	TOLERANCE:	PART NO:	SRT-KRS-0611-XX
DRAWN:	RB	02/28/01	▲	05.11.01	Corr tol to $\pm.3\&\pm.13$ for metric dims	RB	JF			
CHECKED:	GAT	01/20/06	▲	06.07.01	Operating force, E option of 590 \pm 30gf added:	RB	JF	TO 1 DECIMAL PLACE: $\pm.3$	TITLE:	TACT SWITCH
APPROVED:	JF	01/20/06	▲	10.06.05	Dwg updated, Actuator H options, mat corr to ny66	RB	TF			
			▲	01.20.06	Part is RoHS compliant	GAT	JF	TO 2 DECIMAL PLACES: $\pm.13$	SHEET:	2 OF 2
			▲	10.15.12	Correct contact switching rating	GAT	JF			
3RD ANGLE		UNIT:	mm	SCALE:	4:1	REV.	G	AS ANGLES:	$\pm 1/2^\circ$	