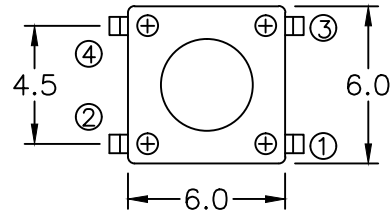


1	2	3	4	5
COMPONENT SPECIFICATION	USE OR REPRODUCTION OF THIS DRAWING FOR THE PURPOSE OF MANUFACTURING THIS ARTICLE OR ANY ARTICLES SHOWN FOR ANY PURPOSE IS STRICTLY PROHIBITED WITHOUT WRITTEN PERMISSION FROM SENIOR INDUSTRIES, INC.			

A



FIRST 'X' IN PART NUMBER DENOTES MOUNTING OPTION.

'I' - INSERTABLE 'L' - SMT L PAD

SECOND 'X' IN PART NUMBER DENOTES ACTUATOR HEIGHT.

'A' - DIM 'H' = 4.3mm 'B' - DIM 'H' = 5.0mm

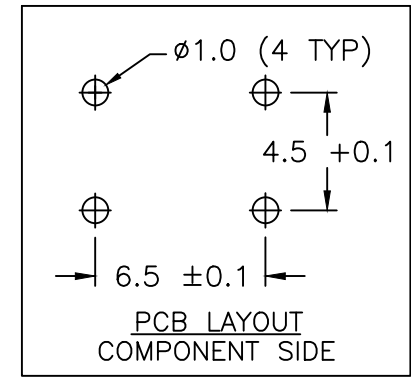
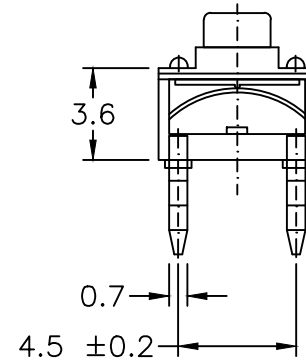
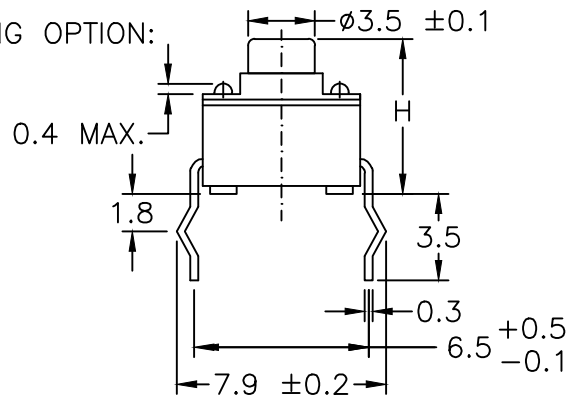
'C' - DIM 'H' = 9.5mm 'D' - DIM 'H' = 13mm

THIRD 'X' IN PART NUMBER DENOTES OPERATING FORCE.

'A' - 130 gf; 'B' - 160 gf; 'C' - 260 gf; 'D' - 100 gf.

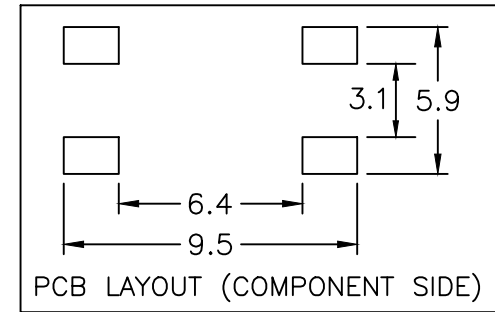
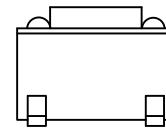
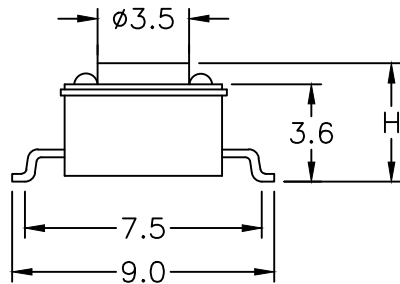
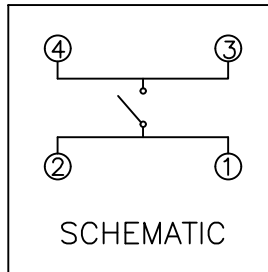
B

INSERTABLE MOUNTING OPTION:



C

SMT L PAD MOUNTING OPTION:



SENIOR INDUSTRIES, INC.

DESIGNED:			SYMBOL	DATE	DESCRIPTION OF REVISIONS:	DRAWN:	APPD:	TOLERANCE:	PART NO:	SRT-KRS-0603-XXX-X
DRAWN:	RB	09/08/03	▲	08.03.05	Corr'd dim. bet. leads from 6.3 to 6.5, UL94HB	GAT	JF	TO 1 DECIMAL PLACE: ±.3 TO 2 DECIMAL PLACES: ±.13	TITLE:	TACT SWITCH
CHECKED:	GAT	08/10/10	▲	10.24.05	Gen dwg updated: spec, dims, view	GAT	JF		SHEET:	1 OF 2
APPROVED:	JF	08/10/10	▲	02.11.10	Chg'd life from 100k to 300k. Added contact options	GAT	JF			
			▲	08.10.10	Remv'd 'sealed' from title.	GAT	JF			
			▲	10.15.12	Corrected electrical and environmental specifications	GAT	JF			
3RD ANGLE		UNIT:	mm	SCALE:	4:1	REV:	G	AS ANGLES: ±1/2'		

1

2

3

4

5

COMPONENT

USE OR REPRODUCTION OF THIS DRAWING FOR THE PURPOSE OF MANUFACTURING THIS ARTICLE OR ANY ARTICLES SHOWN FOR ANY PURPOSE IS STRICTLY PROHIBITED WITHOUT WRITTEN PERMISSION FROM SENIOR INDUSTRIES, INC.

SPECIFICATIONS

ELECTRICAL

CONTACT RATING: 50mA AT 24 VDC
CONTACT RESISTANCE: 100 MILLIOHMS MAX.
INSULATION RESISTANCE: 100 MEGOHMS MIN. AT 250 VDC
DIELECTRIC STRENGTH: 500 VAC FOR 1 MINUTE

MECHANICAL

OPERATING LIFE: 300,000 CYCLES MIN.
TRAVEL: 0.25 +0.2/-0.1 mm
ACTUATOR WITHDRAWAL FORCE: 500gf MIN.

ENVIRONMENTAL

OPERATING TEMPERATURE: -35°C TO +85°C
STORAGE TEMPERATURE: -35°C TO +85°C

MATERIAL

HOUSING: NYLON 4/6, UL94HB, BLACK
ACTUATOR: NYLON 4/6, UL94HB, BLACK
COVER: NYLON 4/6, UL94HB, BLACK
TERMINALS: BRASS, SILVER PLATED
FOURTH 'X' IN PART NUMBER DENOTES CONTACT MATERIAL:
BLANK - STAINLESS STEEL, SILVER CLAD
P - PHOSPHOR BRONZE, SILVER CLAD



DESIGNED:				08.03.05	Corr'ed: dim. bet. leads from 6.3 to 6.5, UL94HB	DRAWN:	GAT	APPD:	JF	TOLERANCE:	PART NO:	SRT-KRS-0603-XXX-X
DRAWN:	RB	09/08/03		10.24.05	Gen dwg updated: spec, dims, view		GAT		JF			
CHECKED:	GAT	08/10/10		02.11.10	Chg'd life from 100k to 300k. Added contact options		GAT		JF	TO 1 DECIMAL PLACE: ±.3 TO 2 DECIMAL PLACES: ±.13	TITLE:	TACT SWITCH
APPROVED:	JF	08/10/10		08.10.10	Remv'd 'sealed' from title.		GAT		JF			
				10.15.12	Corrected electrical and environmental specifications		GAT		JF	AS ANGLES: ±1/2°	SHEET:	2 OF 2
3RD ANGLE		UNIT:	mm	SCALE:	4:1	REV:	G					

A

B

C