

1

2

3

4

COMPONENT SPECIFICATION

USE OR REPRODUCTION OF THIS DRAWING FOR THE PURPOSE OF MANUFACTURING THIS ARTICLE OR ANY ARTICLES SHOWN FOR ANY PURPOSE IS STRICTLY PROHIBITED WITHOUT WRITTEN PERMISSION FROM SENIOR INDUSTRIES, INC.

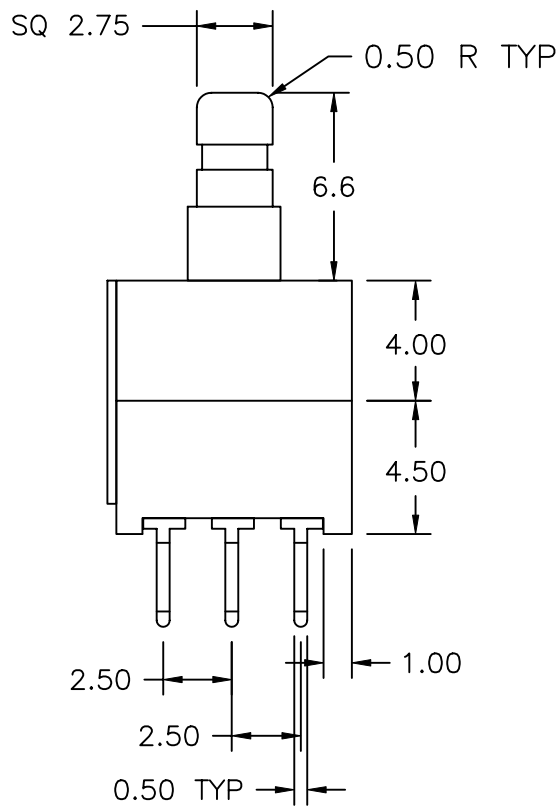
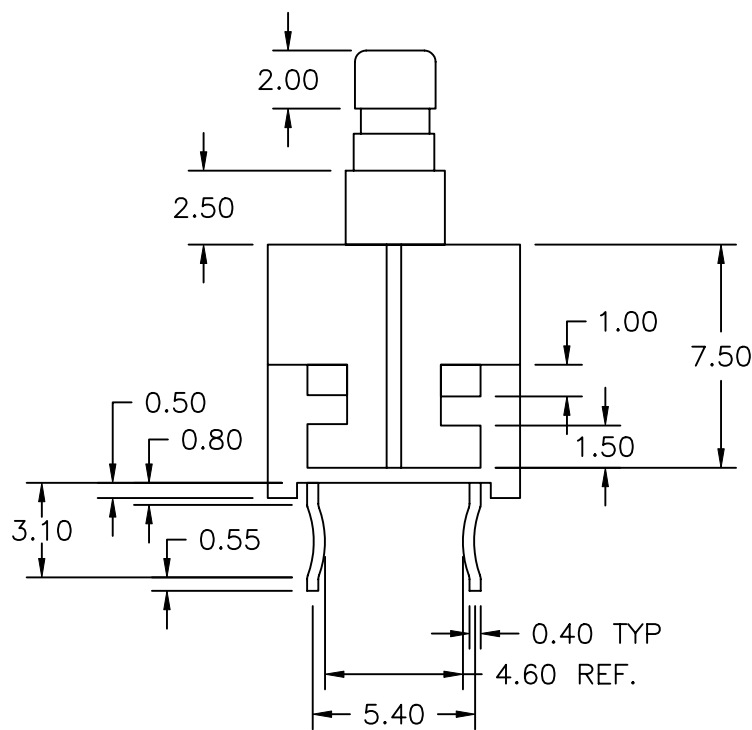
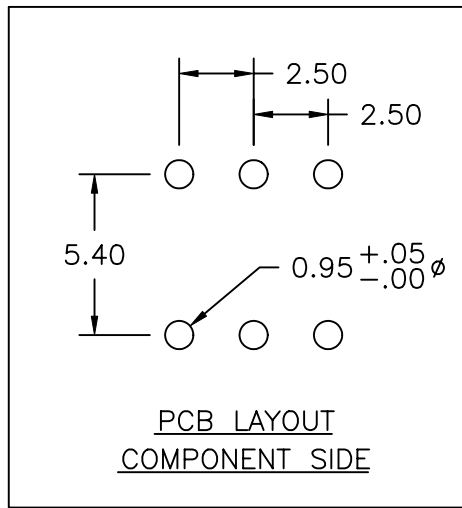
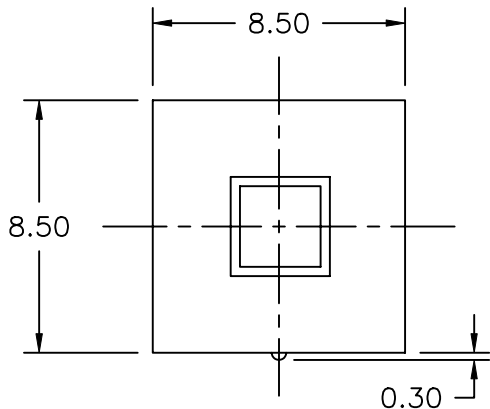
A

B

C

D

E



DESIGNED:			SYM.	DATE	DESCRIPTION OF REVISIONS	DRAWN	APPD.
DRAWN:	HV	07/27/97	▲	08.05.97	NEW	TF	JF
CHECKED:	TF	07/28/98	▲	06.30.98	Corr spacing fr 5.40 to 5.33, toler to±.20, PCB hole ø fr .90 to .95	JAC	JF
APPROVED:	JF	08/13/98	▲	07.28.98	Terminal spacing corr back to 5.40	TF	JF
			▲				

3RD ANGLE		UNIT:	mm	SCALE:	2:1	REV.	C
-----------	--	-------	----	--------	-----	------	---



TOLERANCE:	PART NO:	SRPK-813
TO 1 DECIMAL PLACE: ± .3	TITLE:	LOCKING PUSHBUTTON SWITCH
TO 2 DECIMAL PLACES: ±.20		
AS ANGLES:		
SHEET:		1 OF 2

1

2

3

4

COMPONENT  
SPECIFICATIONUSE OR REPRODUCTION OF THIS DRAWING FOR THE PURPOSE OF MANUFACTURING THIS  
ARTICLE OR ANY ARTICLES SHOWN FOR ANY PURPOSE IS STRICTLY PROHIBITED WITHOUT  
WRITTEN PERMISSION FROM SENIOR INDUSTRIES, INC.SPECIFICATIONSELECTRICAL:

CONTACT RATING: 0.3A @ 30 VDC  
 TIMING: NON-SHORTING  
 CONTACT RESISTANCE: 30 MILLIOHMS MAX. (INITIAL)  
 INSULATION RESISTANCE: 100 MEGOHMS MIN @ 500 VDC. 500VDC IS APPLIED  
 BETWEEN TERMINALS & BETWEEN TERMINAL & CASE  
 FOR 1 MINUTE  $\pm$  5 SEC.  
 DIELECTRIC STRENGTH: 500VAC (50-60Hz) IS APPLIED BETWEEN TERMINALS  
 & BETWEEN TERMINAL & CASE FOR 1 MINUTE. SHOULD  
 BE FREE FROM DIELECTRIC BREAKDOWN.

MECHANICAL:

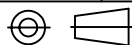
OPERATING MODE: LOCKING  
 OPERATING FORCE: 300  $\pm$  100gf  
 TERMINAL STRENGTH: A STATIC LOAD OF 500gf IS APPLIED ON THE TIP  
 OF TERMINAL IN ARBITRARY DIRECTION FOR 1 MINUTE.  
 SHALL BE FREE FROM FALLING-OFF OR BREAKAGE OF  
 TERMINAL, AS WELL AS BREAKAGE OF SUBSTRATE. THE  
 ELECTRICAL PERFORMANCE REQUIREMENTS SHALL BE MET.  
 LEVER DEVIATION: A STATIC LOAD OF 100gf IS APPLIED ON THE TIP  
 OF THE OPERATING PARTS, AND MEASUREMENT IS  
 MADE OF THE MAX. DEVIATION IN 1mm/METER.

ENDURANCE PROOF:

LIFE TEST: 10,000 CYCLES OPERATED CONTINUOUS UNLOADING  
 (15-18 CYCLES PER MIN.)  
 a. CONTACT RESISTANCE: 100 MILLIOHMS MAX.  
 b. INSULATION RESISTANCE: 100 MEGOHMS MIN.  
 c. WITHSTAND VOLTAGE: 250VAC FOR 1 MINUTE  
 d. OPERATING FORCE: WITHIN +10%, -30% OF  
 SPECIFIED VALUE.

DESIGNED:			SYM.	DATE	DESCRIPTION OF REVISIONS	DRAWN	APPD.
				08.05.97	NEW	TF	JF
DRAWN:	HV	07/27/97		06.30.98	Corr spacing fr 5.40 to 5.33, toler to $\pm$ .20, PCB hole $\phi$ fr .90 to .95	JAC	JF
CHECKED:	TF	07/28/98		07.28.98	Terminal spacing corr back to 5.40	TF	JF
APPROVED:	JF	08/13/98					

3RD ANGLE



UNIT:

mm

SCALE:

REV.

C


**SENIOR  
INDUSTRIES, INC.**

TOLERANCE:

TO 1 DECIMAL PLACE:  $\pm$ TO 2 DECIMAL PLACES:  $\pm$ 

AS ANGLES:

SHEET:

PART NO:

SRPK-813

TITLE:

 LOCKING  
PUSHBUTTON SWITCH

2 OF 2