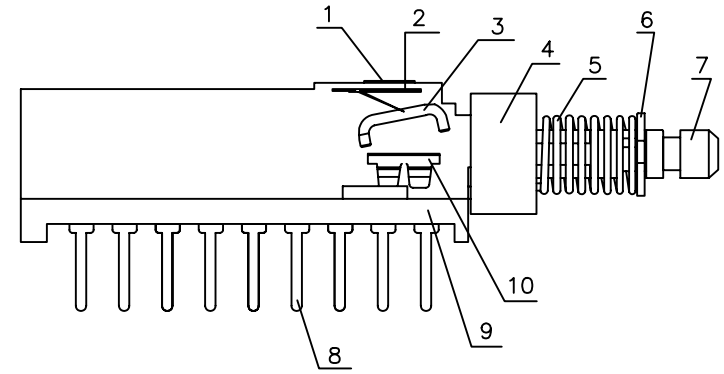
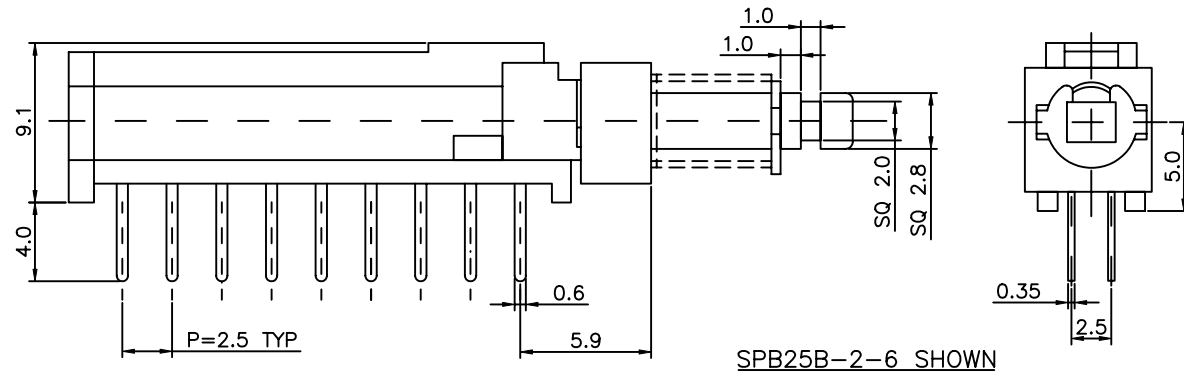
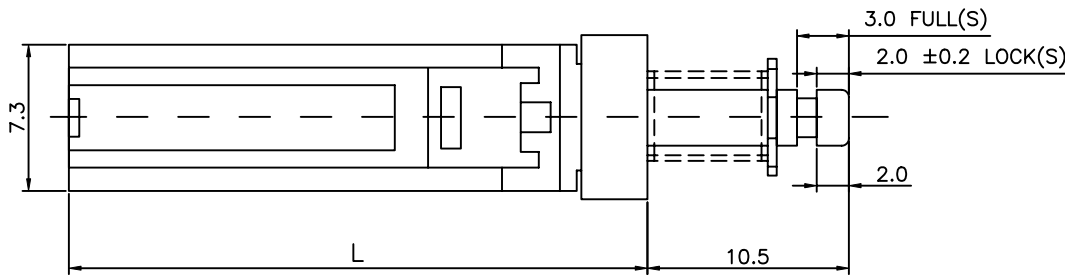


COMPONENT SPECIFICATION

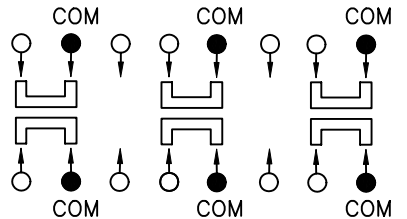
USE OR REPRODUCTION OF THIS DRAWING FOR THE PURPOSE OF MANUFACTURING THIS ARTICLE OR ANY ARTICLES SHOWN FOR ANY PURPOSE IS STRICTLY PROHIBITED WITHOUT WRITTEN PERMISSION FROM SENIOR INDUSTRIES, INC.



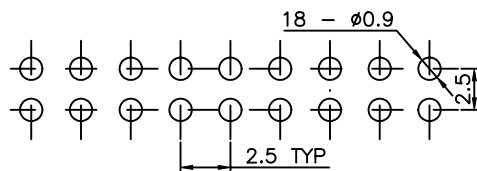
NO. OF POLES:	2	4	6
L	14.6	21.8	29.4

10	CLIP	2/4/6	C5210
9	BASE	1	PA66 15% GLASS FILLED
8	TERMINAL	6/12/18	C2680, SILVER PLATED
7	STEM	1	POM
6	RING	1	SPCC
5	SPRING	1	304 SS
4	SLEEVE	1	POM
3	FIXED ROD	1	304 SS
2	SPRING PLATE	1	301 SS or Be-Cu ALLOY
1	CASE	1	PBT 30% GLASS FILLED
ITEM NO.	PART DESCRIPTION	QTY	MATERIAL

SCHMATIC



P.C.B. LAYOUT



**SENIOR INDUSTRIES, INC.**

DESIGNED:			SYM.	DATE:	DESCRIPTION OF REVISIONS:	DRAWN:	APPD:
DRAWN:	GAT	04/24/08	▲	04.24.08	NEW	GAT	JF
CHECKED:	GAT	04/24/08	▲	.	.		
APPROVED:	JF	04/24/08	▲	.	.		

TOLERANCE:	PART NO:	SPB25B-X-X
TO 1 DECIMAL PLACE: ±.3	TITLE:	PUSHBUTTON SWITCH
TO 2 DECIMAL PLACES: ±.12	SHEET:	1 OF 2

3RD ANGLE	UNIT:	inches	SCALE:	4:1	REV.	A
-----------	-------	--------	--------	-----	------	---

1

2

3

4

5

COMPONENT SPECIFICATION

USE OR REPRODUCTION OF THIS DRAWING FOR THE PURPOSE OF MANUFACTURING THIS ARTICLE OR ANY ARTICLES SHOWN FOR ANY PURPOSE IS STRICTLY PROHIBITED WITHOUT WRITTEN PERMISSION FROM SENIOR INDUSTRIES, INC.

SPECIFICATIONS

ELECTRICAL

CONTACT RATING: DC 30V, 0.1A  
CONTACT RESISTANCE: 50 MILLIOHMS MAX.  
INSULATION RESISTANCE: 100 MEGOHMS MIN. @ 250 VDC  
DIELECTRIC STRENGTH: 250 VDC FOR 1 MINUTE

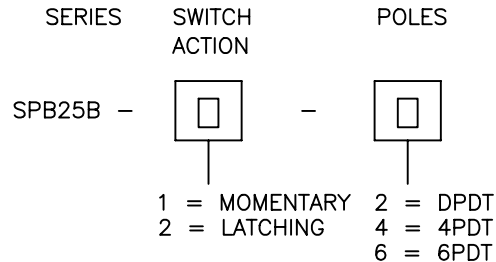
MECHANICAL

OPERATING LIFE: 10,000 CYCLES  
OPERATING FORCE: DPDT: 230gf ±50gf  
4PDT: 280gf ±50gf  
6PDT: 380gf ±50gf


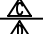
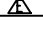
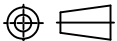
ENVIRONMENTAL

OPERATING TEMPERATURE: -25°C TO +65°C  
STORAGE TEMPERATURE: -30°C TO +65°C  
STORAGE HUMIDITY RANGE: <85%RH  
HAND SOLDERING: USE A SOLDERING IRON OF 30W, CONTROLLED AT 380°C APPRX. 3 SECONDS 1 TIME WHILE APPLYING SOLDER.

PART NUMBER BUILDER:



**SENIOR INDUSTRIES, INC.**

DESIGNED:			SYM.	DATE:	DESCRIPTION OF REVISIONS:	DRAWN:	APPD:	TOLERANCE:	PART NO:	SPB25B-X-X
DRAWN:	GAT	04/24/08		04.24.08	NEW	GAT	JF			
CHECKED:	GAT	04/24/08		.	.			TO 1 DECIMAL PLACE: ±	TITLE:	PUSHBUTTON SWITCH
APPROVED:	JF	04/24/08		.	.			TO 2 DECIMAL PLACES: ±		
3RD ANGLE		UNIT:	inches	SCALE:		REV.	A	AS ANGLES: ±	SHEET:	2 OF 2