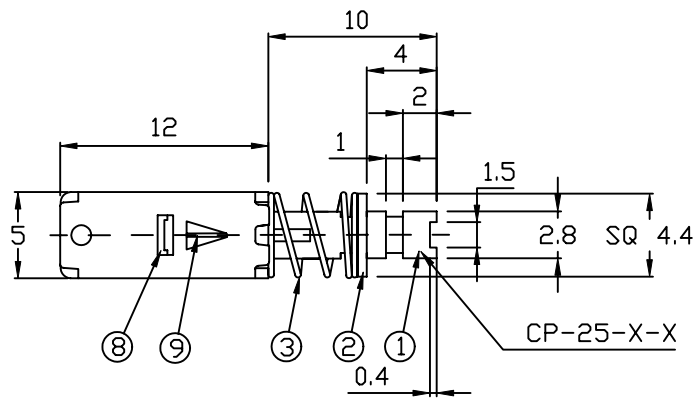
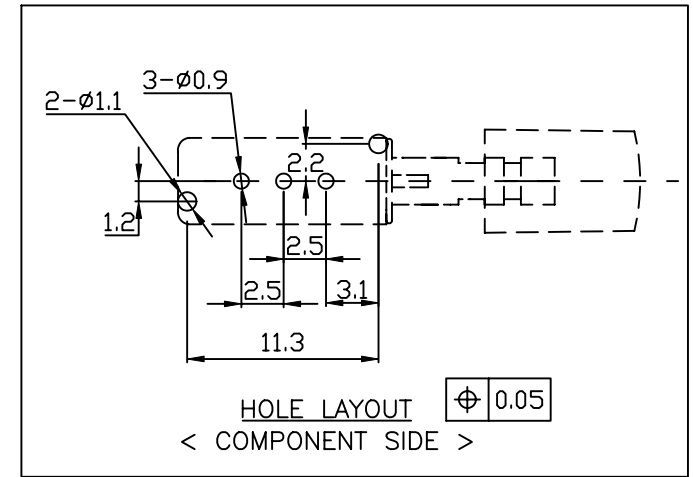
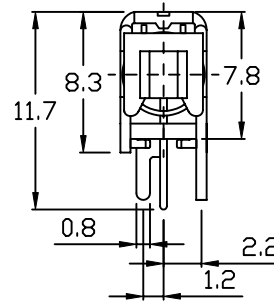
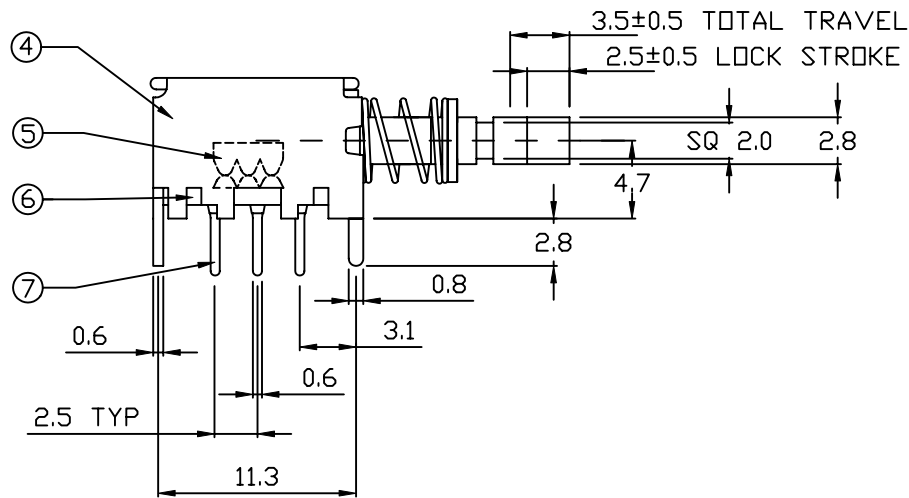


COMPONENT SPECIFICATION

USE OR REPRODUCTION OF THIS DRAWING FOR THE PURPOSE OF MANUFACTURING THIS ARTICLE OR ANY ARTICLES SHOWN FOR ANY PURPOSE IS STRICTLY PROHIBITED WITHOUT WRITTEN PERMISSION FROM SENIOR INDUSTRIES, INC.



9	SPRING WIRE	1	SUS	
8	SPRING PLATE	1	PBS	
7	TERMINAL	1	BRASS STRIP	SILVER
6	BASE	6	PHENOLIC RESIN	
5	CONTACT CLIP	1	PBS	SILVER
4	FRAME	1	SPCC	NICKEL
3	SPRING	2	SUS	NICKEL
2	SPRING RING	1	SUS	
1	ACTUATOR	1	POM, BLUE	
ITEM	DESCRIPTION	QTY	MATERIAL	FINISH



SENIOR INDUSTRIES, INC.

DESIGNED:			SYM.	DATE:	DESCRIPTION OF REVISIONS:	DRAWN:	APPD:
DRAWN:	GAT	01/25/05	▲	01.09.04	NEW	RB	TF
CHECKED:	TF	02/16/05	▲	01.25.05	Upd ed dwg in CAD format, Added -X-X in P.No	GAT	TF
APPROVED:	TF	02/16/05	▲	06.28.05	Gen dwg & spec updated; tolerance corrected	GAT	JF
			▲	.	.		

TOLERANCE:	PART NO:	SPB25-2-1-X-X
TO 1 DECIMAL PLACE: ±.2	TITLE:	PUSHBUTTON SWITCH (SPDT)
TO 2 DECIMAL PLACES: ±.10	SHEET:	1 OF 2
AS ANGLES: ±3°		

3RD ANGLE		UNIT: mm	SCALE: 1:1	REV. C
-----------	--	----------	------------	--------

1
COMPONENT SPECIFICATION

2
USE OR REPRODUCTION OF THIS DRAWING FOR THE PURPOSE OF MANUFACTURING THIS ARTICLE OR ANY ARTICLES SHOWN FOR ANY PURPOSE IS STRICTLY PROHIBITED WITHOUT WRITTEN PERMISSION FROM SENIOR INDUSTRIES, INC.

3
SPECIFICATIONS

ELECTRICAL

CONTACT RATING: 0.3A @ 30VDC
 CONTACT RESISTANCE: 30 MILLIOHMS MAX.
 INSULATION RESISTANCE: 100 MEGOHMS MIN. @ 500 VDC
 DIELECTRIC STRENGTH: 500 VAC FOR 1 MINUTE

PART NUMBER BUILDER:

SERIES	SWITCH ACTION	POLES	CAP STYLE	CAP COLOR
SPB25	2	1		
	LATCHING	1 POLE	A B C	1 = BLUE 2 = RED 3 = BLACK (STD) 4 = BROWN 5 = GREEN 6 = WHITE 7 = GRAY 8 = ORANGE 9 = YELLOW 10 = VIOLET 11 = IVORY/ NEUTRAL

MECHANICAL

OPERATING LIFE: 10,000 CYCLES
 OPERATING FORCE: 250 gf ±50gf
 CAP RETENTION: 2 LBS MIN.

ENVIRONMENTAL

OPERATING TEMPERATURE: -5°C TO +60°C
 HEAT RESISTANCE: SOLDER AT 260°C FOR 5 SECONDS



SENIOR INDUSTRIES, INC.

DESIGNED:			SYMBOL	DATE	DESCRIPTION OF REVISIONS:	DRAWN:	APPD:	TOLERANCE:	PART NO:	SPB25-2-1-X-X
DRAWN:	GAT	01/25/05		01.09.04	NEW	RB	TF	TO 1 DECIMAL PLACE: ±	TITLE:	PUSHBUTTON SWITCH (SPDT)
CHECKED:	TF	02/16/05		01.25.05	Upded dwg in CAD format, Added -X-X in P.No	GAT	TF			
APPROVED:	TF	02/16/05		06.28.05	Gen dwg & spec updated; tolerance corrected	GAT	JF	AS ANGLES: ± °	SHEET:	2 OF 2
3RD ANGLE		UNIT:	mm	SCALE:		REV.	C			