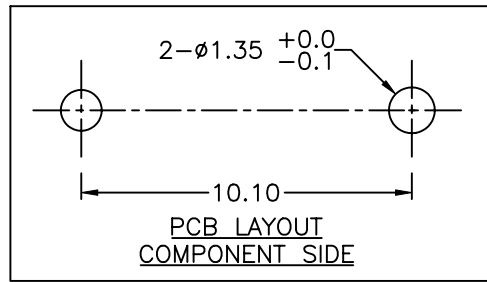
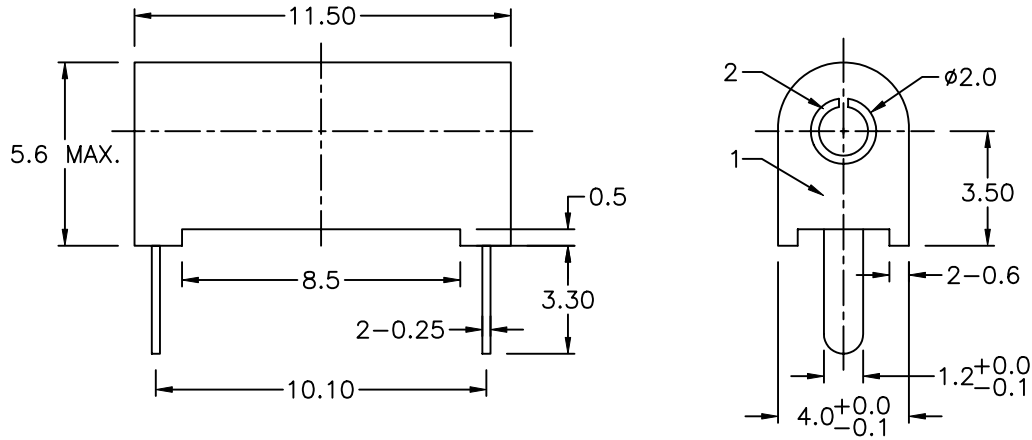


COMPONENT SPECIFICATION

USE OR REPRODUCTION OF THIS DRAWING FOR THE PURPOSE OF MANUFACTURING THIS ARTICLE OR ANY ARTICLES SHOWN FOR ANY PURPOSE IS STRICTLY PROHIBITED WITHOUT WRITTEN PERMISSION FROM SENIOR INDUSTRIES, INC.



SPECIFICATIONS:

ELECTRICAL:

CONTACT RATING: 6.3 AMPS
 CONTACT RESISTANCE: 30 MILLIOHMS MAX
 INSULATION RESISTANCE: 10,000 MEGOHMS MIN AT 500 VDC

MECHANICAL:

WITHDRAWAL FORCE: 0.2 KG MIN USING .080" ±.001 Ø PIN
 SOLDERABILITY: JACK SHALL PASS SOLDERABILITY TEST PER TP1101 WITH MINIMUM 95% WETTING AT A SOLDER TEMPERATURE OF 260±5°C AND A DWELL TIME OF 5±1 SECONDS

ENVIRONMENTAL:

OPERATING TEMPERATURE: -25° TO +70°C

NOTES:

X SUFFIX DENOTES HOUSING COLOR OPTIONS:

- 1 - BLUE
- 2 - RED
- 3 - BLACK (STD)
- 4 - BROWN
- 5 - GREEN
- 6 - WHITE
- 7 - GRAY
- 8 - ORANGE
- 9 - YELLOW
- 10 - VIOLET
- 11 - IVORY/NEUTRAL

NO.	DESCRIPTION	MATERIAL/FINISH
1	HOUSING	PA66, BLACK
2	CONTACTS/LEADS	BRASS, TIN PLATED



SENIOR INDUSTRIES, INC.

DESIGNED:			SYM.	DATE:	DESCRIPTION OF REVISIONS:	DRAWN:	APPD:	TOLERANCE:	PART NO:	SI-526A-X
DRAWN:	HV	11/02/06	▲	11.02.06	NEW	GAT	JF			
CHECKED:	GAT	11/02/06	▲	.	.			TO 1 DECIMAL PLACE: ±.2	TITLE:	TEST JACK
APPROVED:	JF	11/02/06	▲	.	.			TO 2 DECIMAL PLACES: ±.10	SHEET:	1 OF 1
3RD ANGLE		UNIT:	mm	SCALE:	1:1	REV:	A	AS ANGLES:	±1/2°	