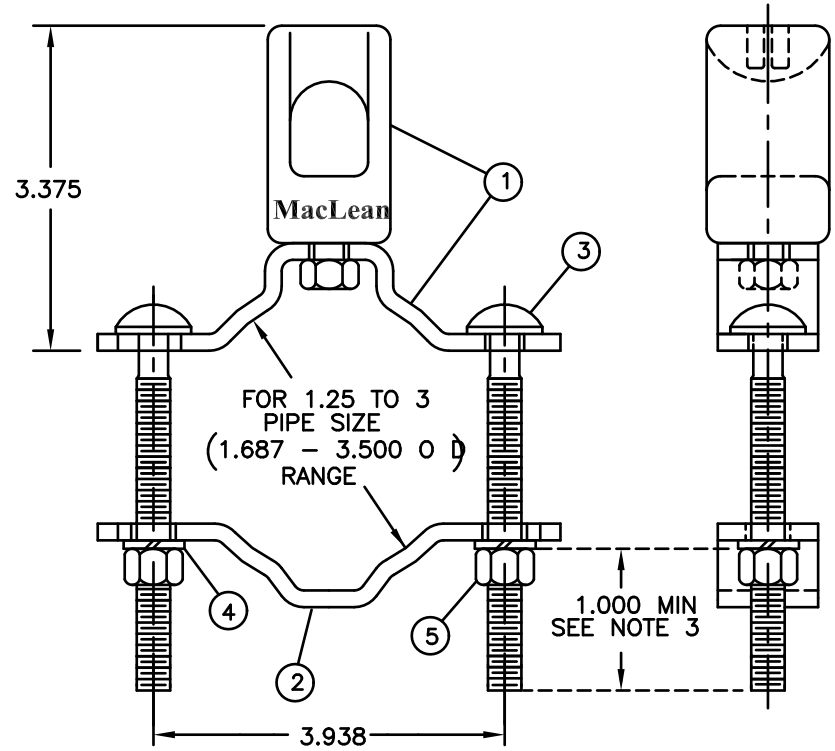


A | B | C | D | E | F

PAPER SIZE		DRAWING NUMBER	
B SIZE		1659-039	
REV	REVISION DATE	ECO	
A	12-20-06	8318	



ITEM	PART NO.	DWG NO.	QTY	DESCRIPTION
1	SEE TABLE A	1659-133	1	WIREHOLDER CLEVIS SUB-ASSY.
2	P40246	1663-093	1	LOWER PIPE BRACKET
3	P41531	1651-011	2	.375 X 3.500 CARRIAGE BOLT
4	F102360	1658-012	2	.375 SPRING LOCKWASHER
5	P41539	1660-009	2	.375 HEX NUT

TABLE A

CATALOG NO.	PART NO.	ITEM ①	WIREHOLDER COLOR
J0588Z	F614517	P42343	BLACK
J0588ZG	F102508	P42344	GRAY

NOTES:

1. ALL DIMENSIONS ARE REFERENCE AND ARE IN INCHES
2. ALL ITEMS EXCEPT INSULATOR ARE HOT DIP GALVANIZED (ASTM A-153)
3. HEX NUTS (ITEM 5) TO BE INSTALLED A 1.000 MIN ONTO THE BOLT
4. VERIFY ALL ITEMS ASSEMBLED PER TABLE

ADDITIONAL NOTES:

1. REFERENCE ES-3100 FOR PRIOR MPJ DRAWING AND PART INFORMATION.

PART NO. F614517, F102508

This drawing contains confidential information that is the property of MacLean Power, L.L.C. ("MacLean"). Use of MacLean's confidential information without MacLean's express written consent is strictly prohibited and may expose you to legal liability. If you believe that you received this material in error, please destroy it or return it to "MacLean Power, L.L.C., 11411 Addison, Franklin Park, Illinois 60131, USA."

DRAWING-COMPUTER LOCATION:
DRAWING-COMPUTER LOCATION:

TOLERANCES UNLESS SPECIFIED	inch
0.XX	----
0.XXX	----
ANGLE	----



MACLEAN POWER SYSTEMS
RELIABLE POWER PRODUCTS
11411 ADDISON STREET
FRANKLIN PARK, IL 60131

DRAWN BY	ENGINEER	CHECKER	CATALOG #	SCALE	DESIGN DATE
RRL	RRL	FJS	SEE TABLE	NTS	4-22-93
DRAWING TITLE / DESCRIPTION					DRAWING NUMBER
WIREHOLDER ASS'Y					1659-039

Form: 00-340a / 03-23-00